



RESPONSIBLE RESOURCE DEVELOPMENT

A MINING ENGINEERING FIRM WITH STRONG INTERNATIONAL EXPERIENCE

Founded in 2009, Global Resource Engineering (GRE) is a multifaceted engineering firm specialising in the mining industry. Our focus is to add value to your project and company by evaluating and understanding your needs, employing innovative ideas, and applying sound engineering while maintaining an economically driven approach. We are a dynamic and growing engineering firm whose hallmark of success, through all mining cycles, has been the ability to provide quality, cost effective, engineering and creative solutions for our clients through a highly collaborative approach. GRE's staff consists of a combination of highly experienced senior level professionals, project managers, technical staff and support personnel. GRE's wide range of services are available to meet specific needs including mining, metallurgy, geology, water, geotechnical, tailings and environmental consulting.



COLLECTIVE TEAM EXPERIENCE:

- 300+ Resource Estimates
- 200+ Engineering Studies
- Over 20 projects into production
- 30+ Due Diligence studies
- Spanish language fluency
- Latin Amer., USA, Africa, Europe

RECENT KEY PROJECTS:

GOLD SPRINGS RESOURCE- GOLD SPRINGS - USA

- Resource estimate for 4 separate deposit areas
- Three 43-101 resource reports
- 15,000 tpd 3 stage crush & agglomerate HLF
- Gold recovery plant
- Metallurgical test program support

LUMINA GOLD, CANGREJOS - ECUADOR

- PEA-stage open pit gold mine
- Geochemical characterization, ARD prevention planning
- Surface water management, Mine dewatering,

KAZ MINERALS - AKTOGAY MINE - KAZAKHSTAN

- Bioleach conversion of existing HLF
- Construction of aerated HLF and inoculum system
- Test work design and supervision

BEAR CREEK MINING, CORANI - PERU

- 22,500 tpd open pit silver lead zinc @ 5,000 MASL
- FS field investigation: geotechnical, hydrogeo, & environmental baseline
- Geometallurgical modeling
- FS capital & operating cost estimation

CAPSTONE COPPER - PINTO VALLEY - USA

- Demo heap design and construction for primary copper leaching
- Twin HLF with bioleach and Jeti
- Column program design and supervision
- Site water balance update

SKEENA RESOURCES - ESKAY CREEK - CANADA

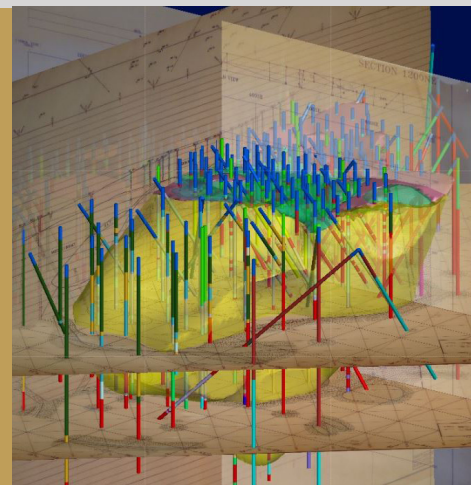
- Part of FS Team
- Resource update
- Mine design
- Metallurgical review



SERVICES:

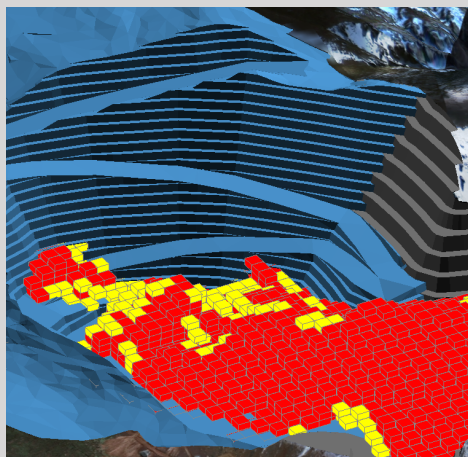
GEOLOGY & RESOURCE ESTIMATION

Exploration Sampling Program Design
 Drillhole sampling & assay QA/QC
 3D Geological and Structural Modeling
 Mineral Resource Estimation and Technical Reports



MINING & GEOTECHNICAL ENGINEERING

Open Pit & Underground Mine Design and Engineering
 Mine Production and Cost Optimization
 Geometallurgical Modeling
 Rock Mechanics



PROJECT VALUATION & OPTIMIZATION

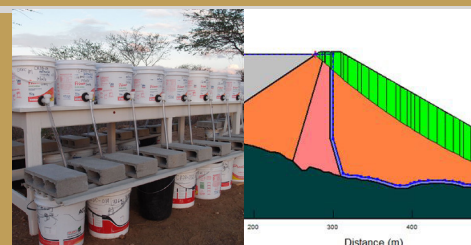
Project Due Diligence
 Multi-Scenario Economic Modeling
 Scoping Studies / PEA, PFS, FS Studies
 Technical Reports (NI 43-101, Guide 7, JORC)

MINERAL PROCESSING

Test Work Design and Supervision
 Process Flowsheet Development
 Plant Audits
 MetSim Modeling
 Biological Oxidation Expertise

MINE WASTE MANAGEMENT

Conventional & Dry Stack Tailings Design
 Waste Rock Facility Design
 ARD Mitigation & Management
 Geochemical Characterization
 Mine Waste Cover Design & Seepage Modeling



HYDROGEOLOGY AND WATER RESOURCES

Groundwater Characterization & Modeling
 Mine Water Balance Studies
 Surface Water Engineering



SENIOR LEADERSHIP

Todd Harvey, PhD - President - Director Process Engineering
 Larry Breckenridge, P.E. - Principal Environmental Engineer
 Terre Lane - Principal Mining Engineer
 Rick Moritz - Principal Mining & Process Engineer
 Luis Quirindongo - Senior Geotechnical Engineer

EXPERIENCE LANGUAGE

30+ yrs	Spanish Functional
20+ yrs	Spanish Fluent
30+ yrs	
30+ yrs	
18 yrs	Native Speaker